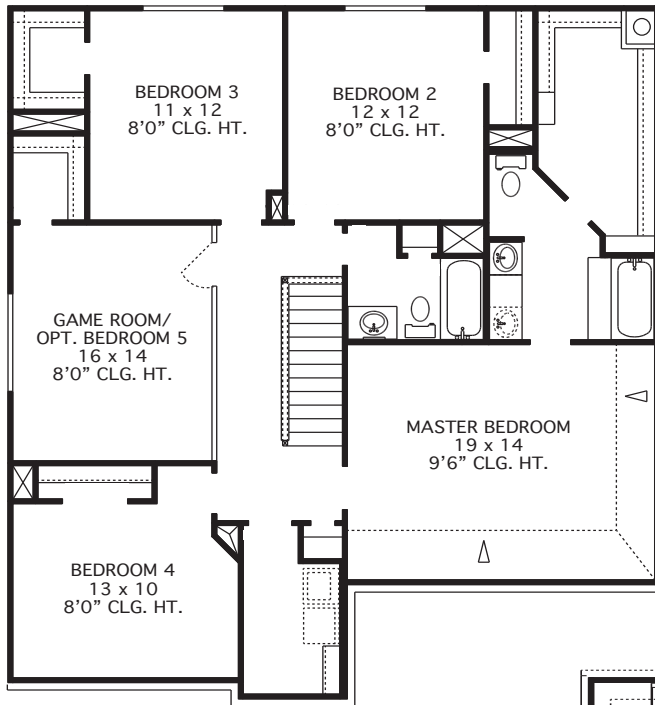
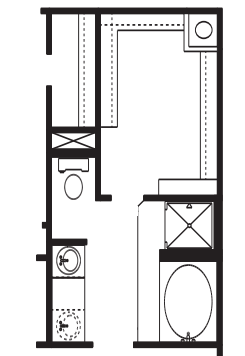


THE ASCOT • 2,667 Sq. Ft.

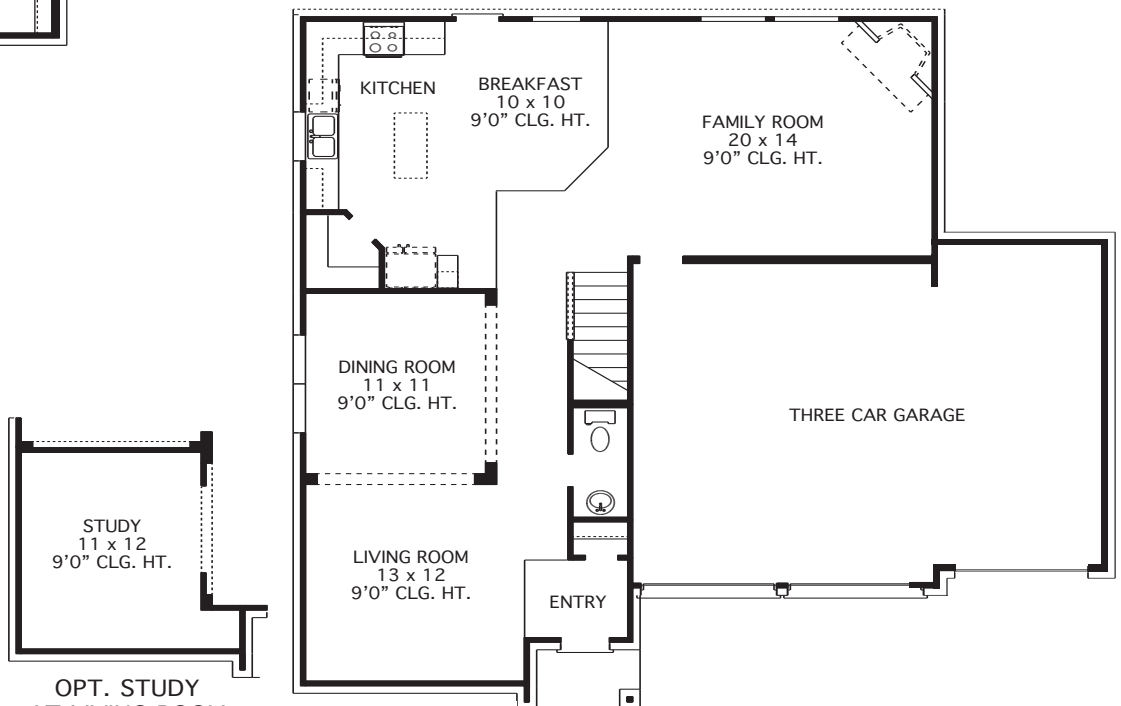
- 4 Bedrooms, 2 1/2 Baths
- Spacious Family Room
- Convenient Utility Room Up
- Oversized Master Bedroom with Large Walk-In Closet



SECOND FLOOR



OPT. MASTER BATH



OPT. STUDY
 AT LIVING ROOM

FIRST FLOOR

All square footage is approximate. Anglia Homes reserves the right to change specifications and designs without notice.



THE ASCOT • 2,667 Sq. Ft.



ELEVATION "A"



ELEVATION "D"



ELEVATION "B"



ELEVATION "E"



ELEVATION "C"



ELEVATION "F"

All elevations and floor plan renderings may vary due to community specific Deed Restrictions, Building Code Requirements or Subdivision Builder Requirements as listed on Design Feature Sheet.