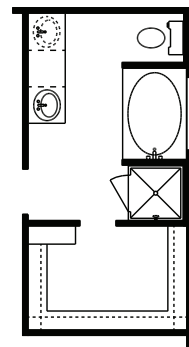
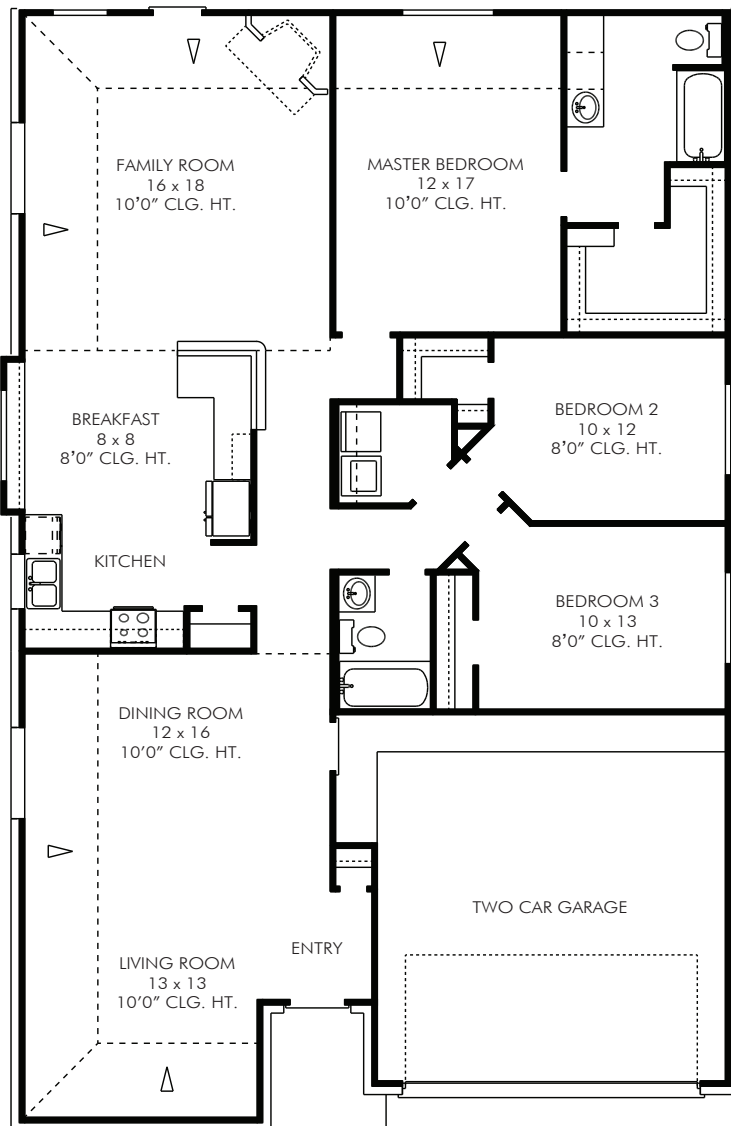
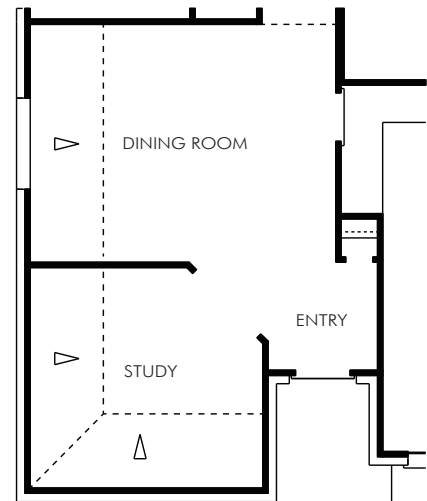


THE EPSOM • 1,931 Sq. Ft.

- 3 Bedrooms, 2 Baths
- Spacious Family Room
- Formal Living and Dining Rooms
- Master Bedroom with Large Walk-In Closet



OPT.
MASTER BATH



OPT. STUDY AT LIVING ROOM

Approved by: 5/01/2013

All square footage is approximate. Anglia Homes reserves the right to change specifications and designs without notice.



THE EPSOM • 1,931 Sq. Ft.



ELEVATION X



ELEVATION Y

All elevations and floor plan renderings may vary due to community specific Deed Restrictions, Building Code Requirements or Subdivision Builder Requirements as listed on Design Feature Sheet.